

A decorative graphic on the right side of the page consists of three blue circles of varying sizes, each with a lighter blue ring around its center. These circles are connected by thin blue lines that form a triangular shape. The largest circle is at the top right, a smaller one is in the middle, and a very large one is at the bottom right, partially cut off by the edge of the page.

# Evoltrack- SocialNetwork 1.2

How to install

<http://reuse.cos.ufrj.br/>

<http://reuse.cos.ufrj.br/evoltrack/>

<http://reuse.cos.ufrj.br/evoltrack/socialnetwork>

Guide version: 1.2

**REUSE TEAM**

**05/09/2011**



## Summary

<b>1. Java Installation</b> .....	<b>3</b>
<b>2. Eclipse Installation</b> .....	<b>3</b>
<b>3. Subversion Eclipse Plug-in Installation</b> .....	<b>3</b>
<b>4. Installing EvolTrack-SN</b> .....	<b>4</b>
<b>4.1. Galileo release</b> .....	<b>4</b>
<b>5. Starting EvolTrack-SN</b> .....	<b>10</b>
<b>6. Configuring EvolTrack-SN</b> .....	<b>12</b>
<b>References</b> .....	<b>15</b>



## **1. JAVA INSTALLATION**

---

The first step is the Java Development Kit (JDK) installation (available at <http://java.sun.com/>). Select the downloads menu and search for Java 6 version. Then, download the executable file and install it. The JDK includes the Java Runtime Environment (JRE).

## **2. ECLIPSE INSTALLATION**

---

It is necessary to install Eclipse IDE. Go to <http://www.eclipse.org/> and download Eclipse. Currently, EvolTrack team is using Galileo release (version 3.4.2). After downloading, open the ZIP file and extract it to a local folder (e.g. c:\Eclipse or c:\EclipseEvolTrack). Run Eclipse by opening `eclipse.exe` file.

## **3. SUBVERSION ECLIPSE PLUG-IN INSTALLATION**

---

For using SVN with Eclipse platform, it is necessary to install a plug-in. We recommend Subversive plug-in, available at:

<http://www.eclipse.org/subversive/documentation/gettingStarted/aboutSubversive/install.php>

Follow the installation steps described in this website.

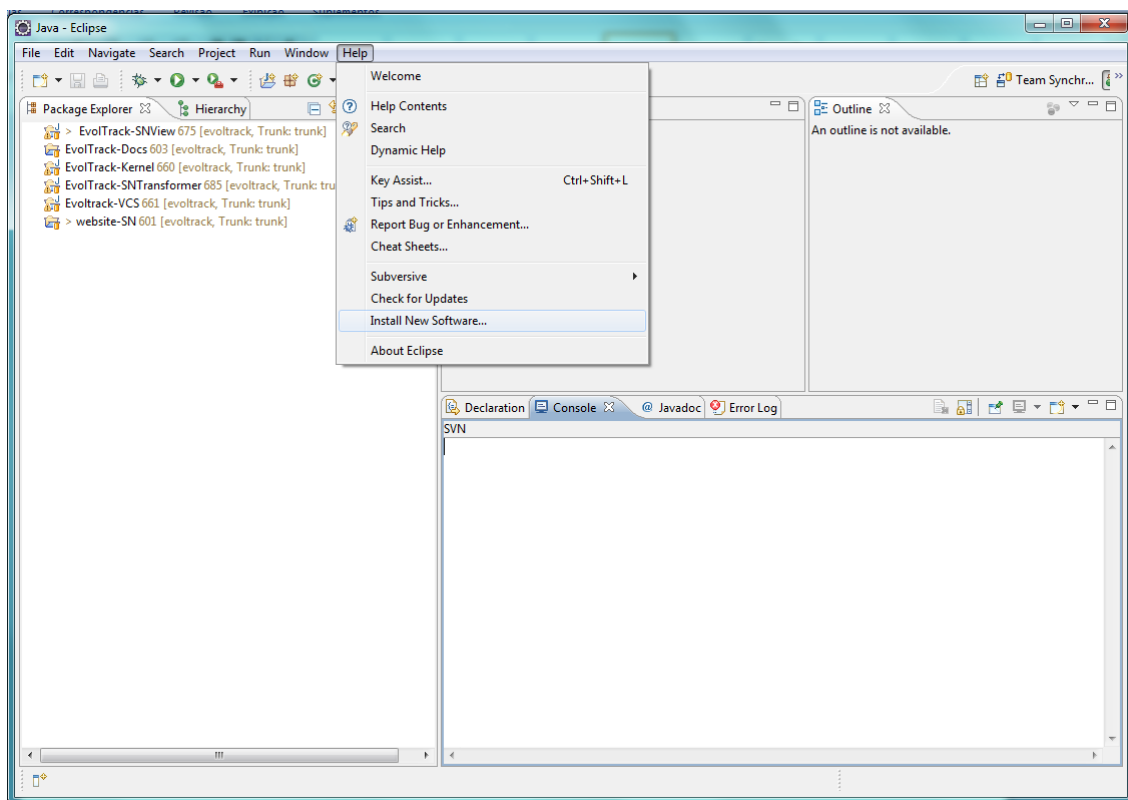
## 4. INSTALLING EVOLTRACK-SN

---

Open Eclipse and follow the following instructions<sup>1</sup>:

### 4.1. Galileo release

In Eclipse menu, select “Help” / “Install New Software...”

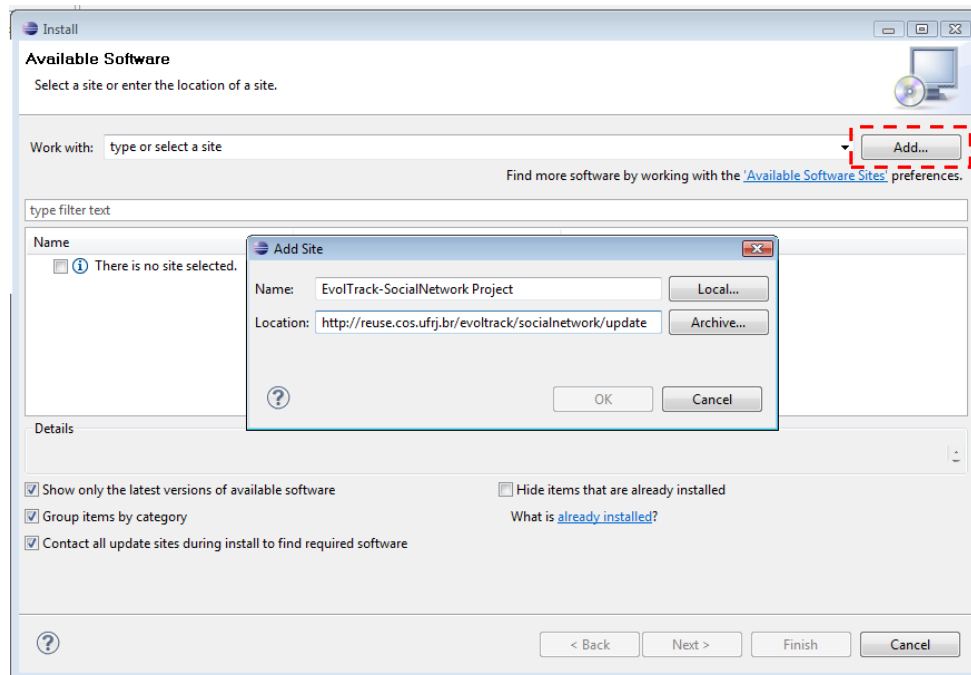


---

<sup>1</sup> Not tested yet on other installations

In the new window, select the “Add...” option and fill in the following data:

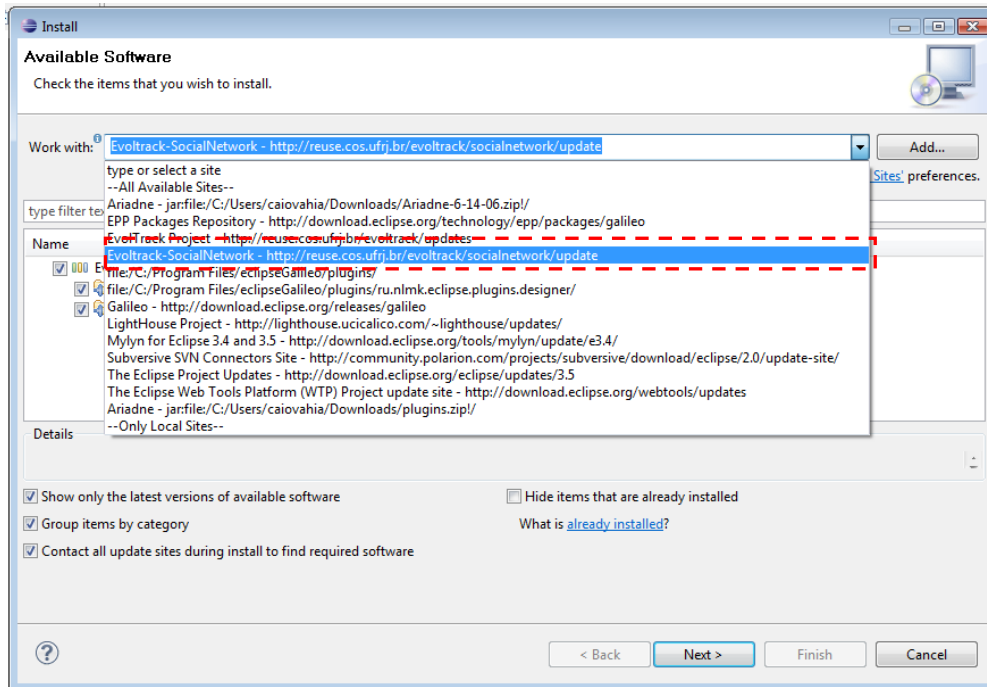
- Name: EvoTrack-SocialNetwork Project
- Location: <http://reuse.cos.ufrj.br/evoltrack/socialnetwork/update>



Select “OK”.

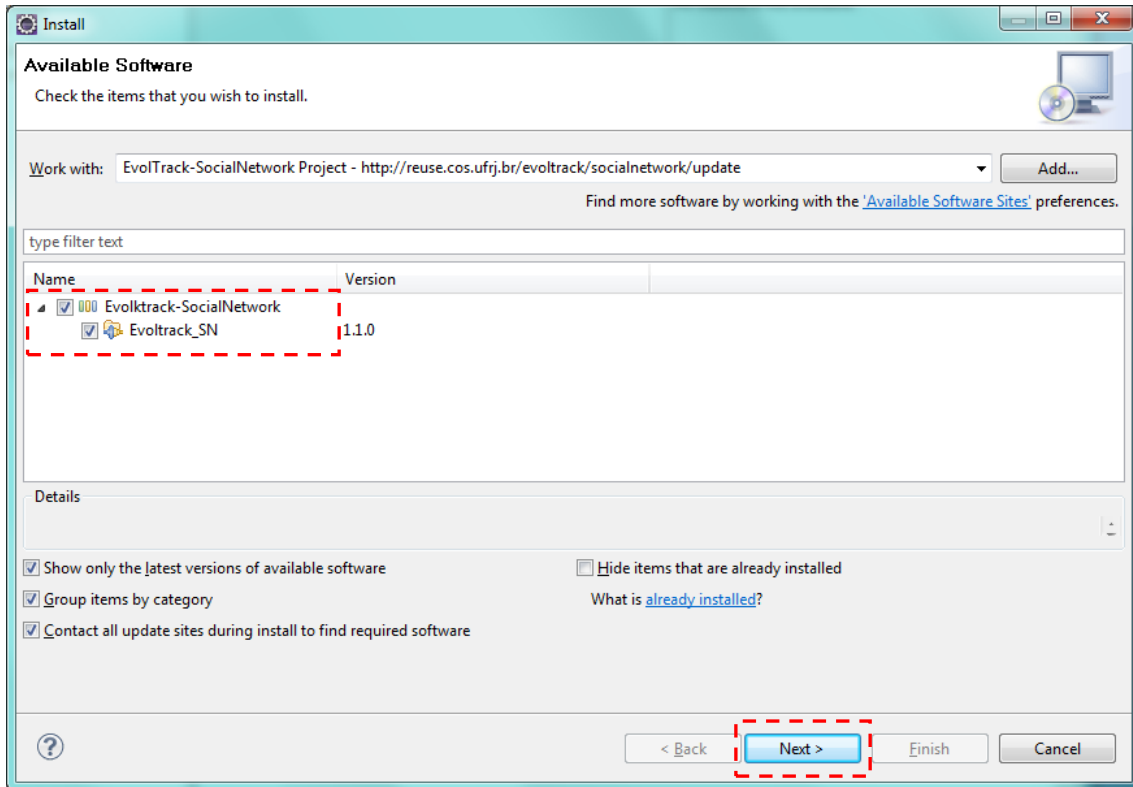


Choose “Evoltrack-SocialNetwork” in the “Work with:” field.



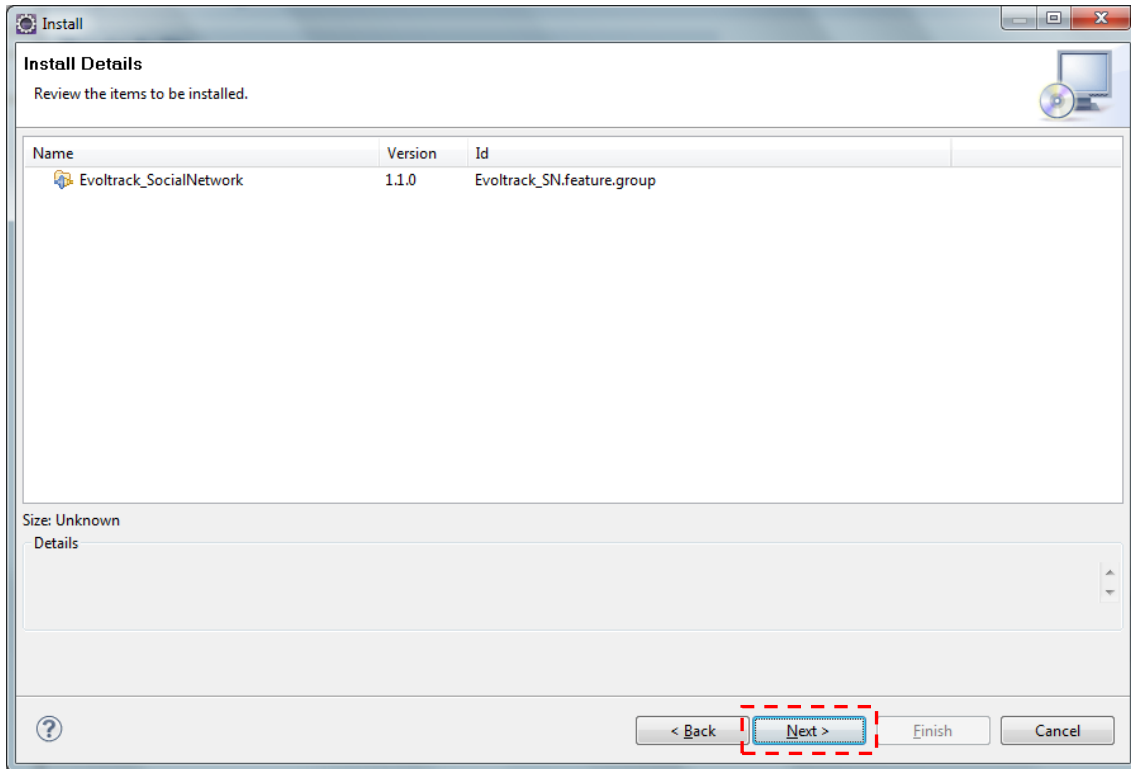


Finally, select all software and choose “Next” option.



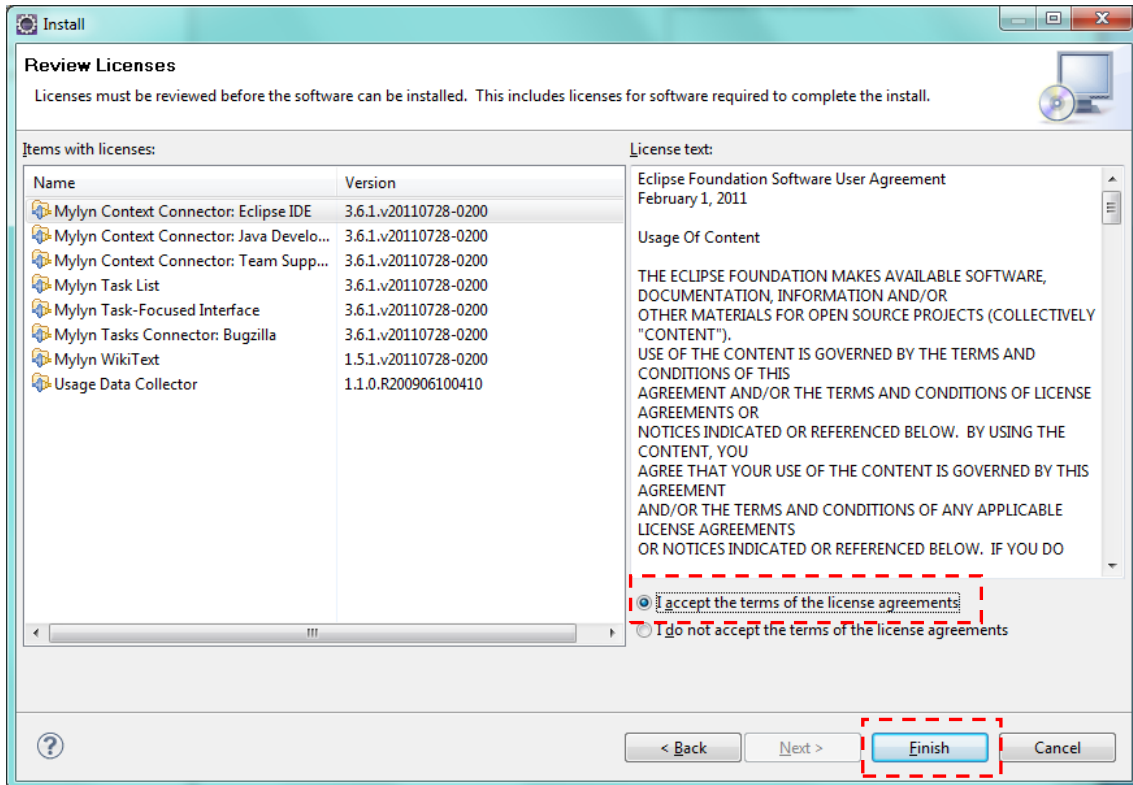


Check the items that will be installed and click “Next”.

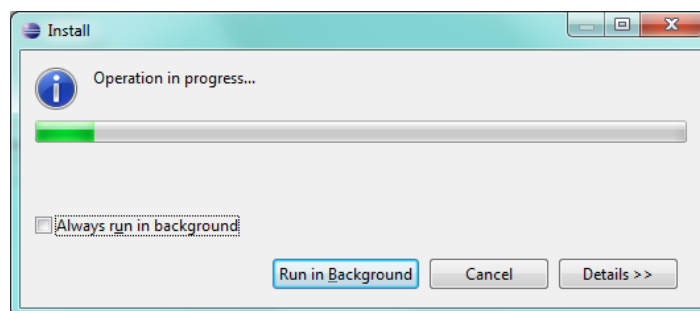




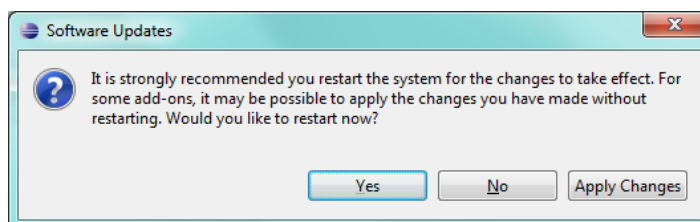
If you accept the terms of the license agreement, select “Finish”.



Wait for the installation to be completed.



You must restart Eclipse for accomplishing the installation.



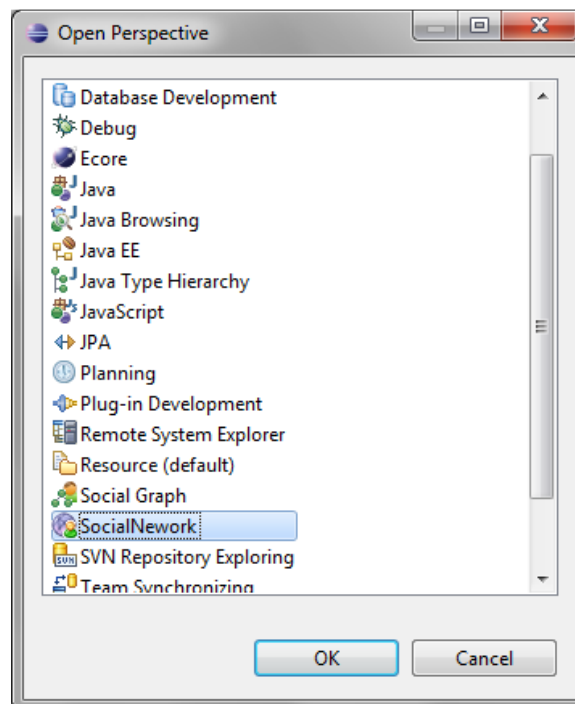
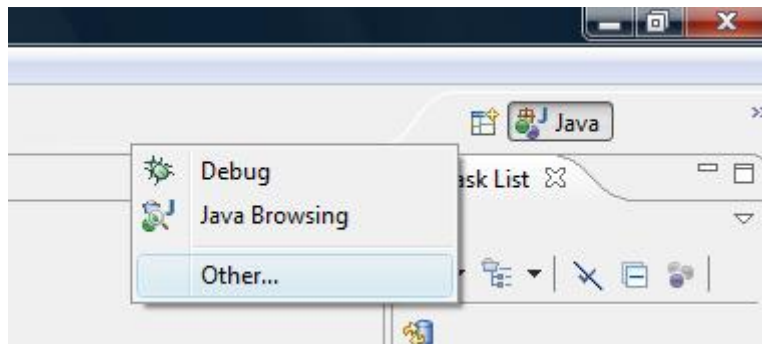
Select “Yes” and wait for Eclipse restart process.

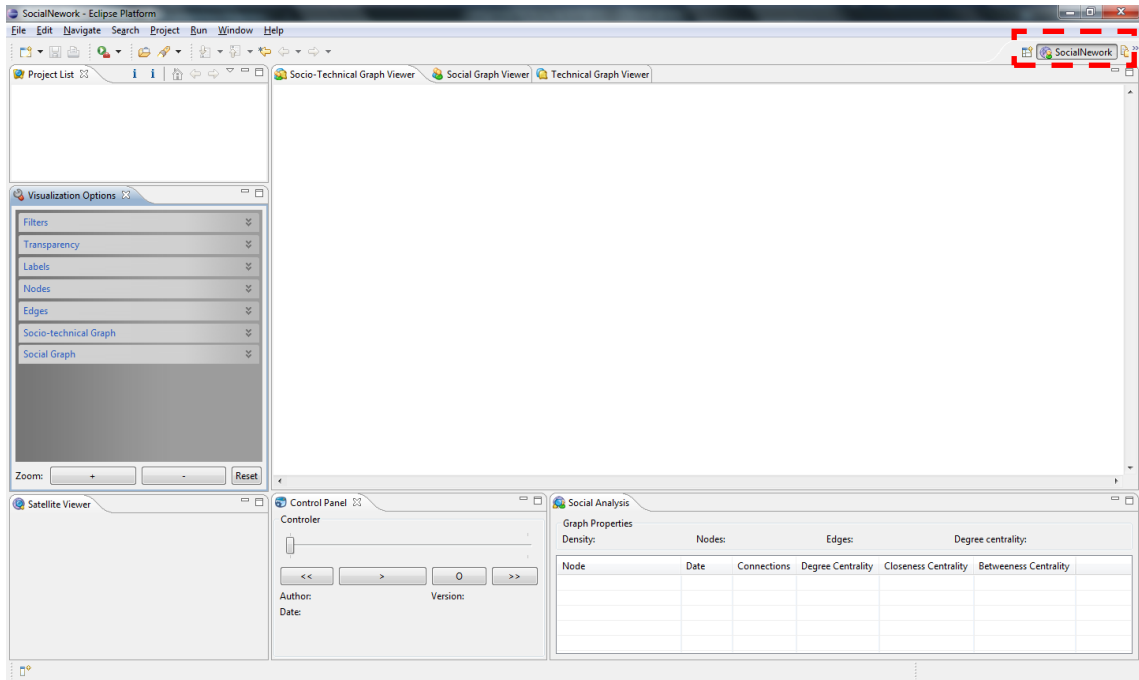
## 5. STARTING EVOLTRACK-SN

---

The Evoltrack-SN is formed by 4 modules: Evoltrack-kernel, SNTransformer, SNView and data sources. There may be more than one data source available, the user must decide which (or more than one) he/she wants to use.

To access the system tab, the user must open the *SocialNetwork* perspective:



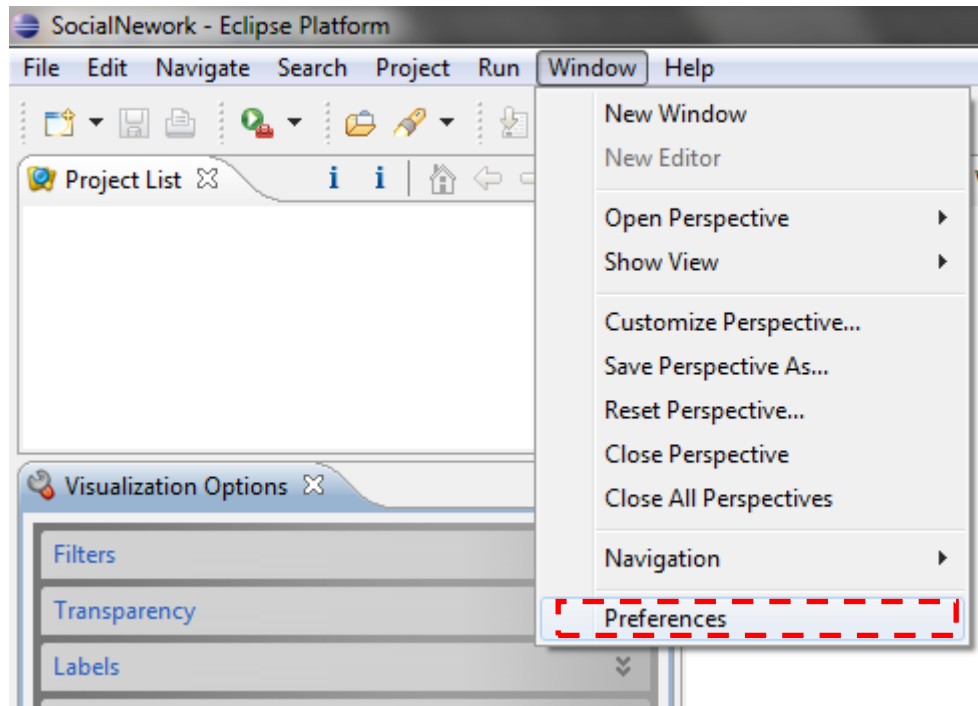


*SocialNetwork's default screen*

## 6. CONFIGURING EVOLTRACK-SN

---

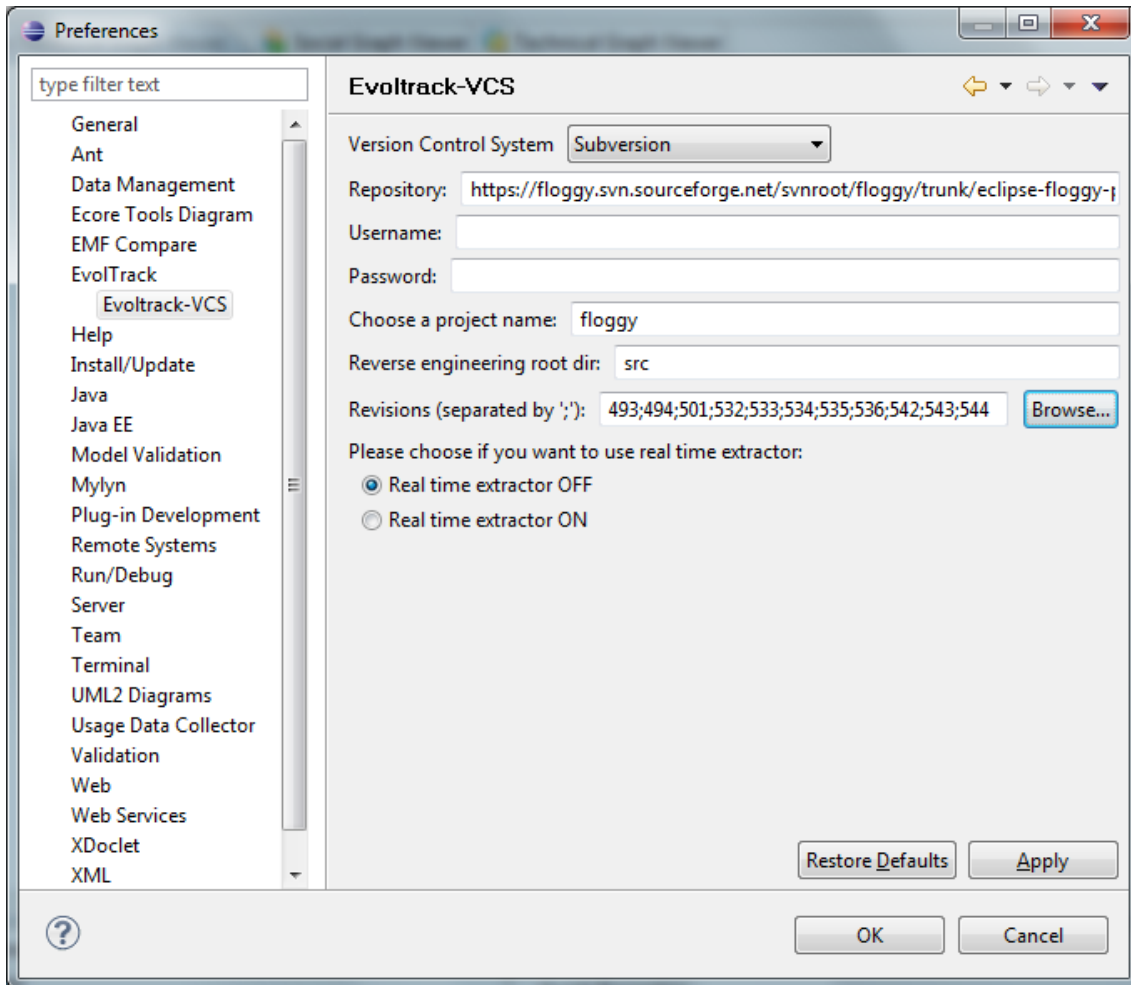
The Evoltrack-SN preferences page can be accessed at Windows > Preferences... :



According to the chosen data source, its configuration can be modified here.

For instance, the EvolTrack-VCS include:

- URL of the target study project;
- The username and password for the project's SVN access;
- Project's name;
- The directory used as root to start the reverse engineering;
- The desired revisions (separated by “;”);
- The option to turn on the real-time extractor;

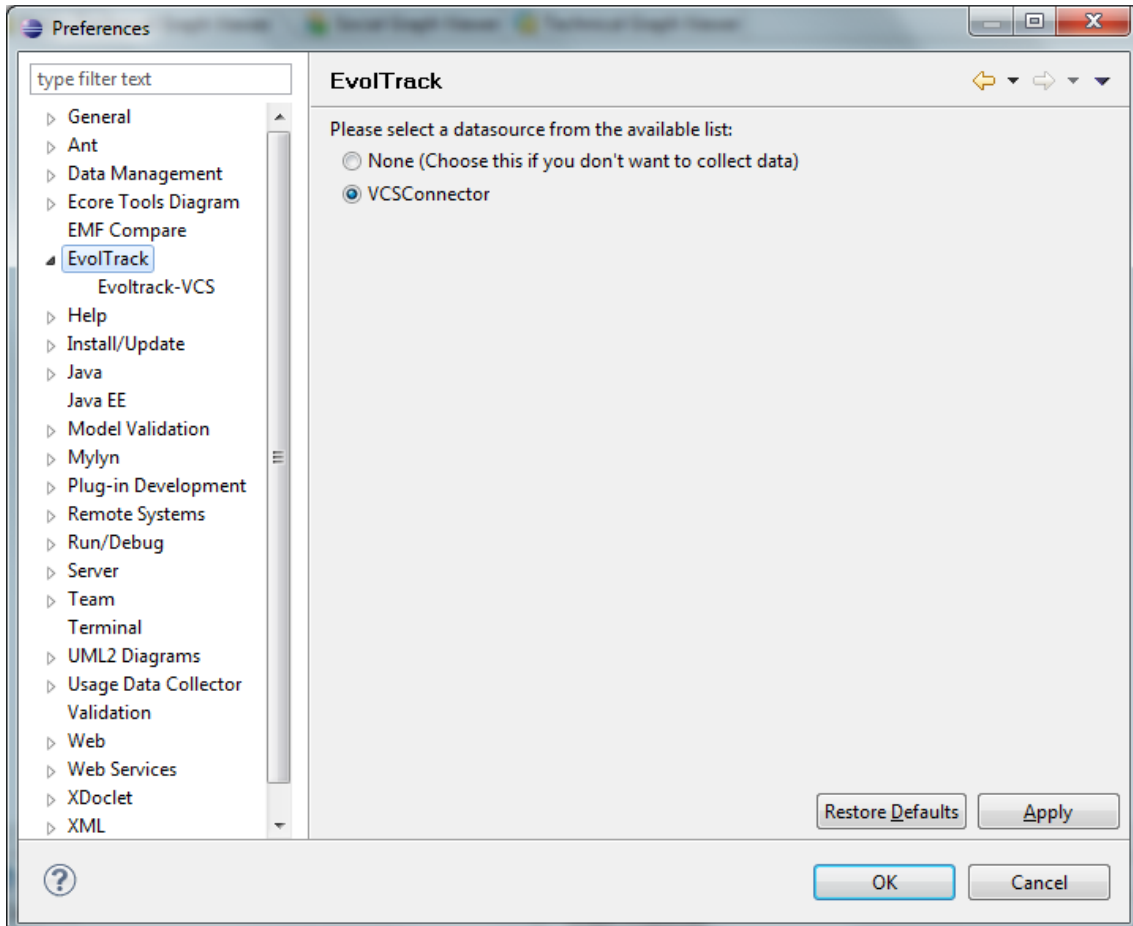


Example's project (Floggy):

Project link: <http://floggy.sourceforge.net/Link>

SVN: <https://floggy.svn.sourceforge.net/svnroot/floggy/trunk/eclipse-floggy-plugin/>

After the configurations are done, the data source that will be used can be defined, according to the previous installations:





## REFERENCES

---

Evoltrack –SocialNewtork – Available at: <http://reuse.cos.ufrj.br/evoltrack/socialnetwork>

Evoltrack – Available at: <http://reuse.cos.ufrj.br/evoltrack/>

Magdaleno, A.M.; Vahia, C.M.; Werner, C.M.L.; Araujo, R.M. EvolTrack-SocialNetwork: An Approach to Understand Collaboration in Software Development Processes. [Second Workshop of the Brazilian Institute for Web Science Research](#), Rio de Janeiro, 2011.

MAGDALENO, A. M.; WERNER, C. M. L.; ARAUJO, R. M., 2010, “Analyzing Collaboration in Software Development Processes through Social Networks”. International Symposium on Leveraging Applications of Formal Methods, Verification and Validation (ISoLA), pp. 435-446, Heraklion, Crete, Greece. [Citação](#)

MAGDALENO, A. M.; WERNER, C. M. L.; ARAUJO, R. M., 2010, Estudo de Ferramentas de Mineração, Visualização e Análise de Redes Sociais, Relatório Técnico, PESC-COPPE. [Disponível em: http://www.cos.ufrj.br](http://www.cos.ufrj.br).

VAHIA, C. M.; MAGDALENO, A. M.; WERNER, C. M. L.; 2011, “EvolTrack-SocialNetwork: Uma ferramenta de apoio à visualização de redes sociais para equipes de desenvolvimento de software”. Congresso Brasileiro de Software: Teoria e Prática (CBSOFT) - Sessão de Ferramentas, São Paulo, SP, Brasil (to appear).

WERNER, C. M. L.; MURTA, L.; SCHOTS, M.; MAGDALENO, A. M.; SILVA, M.; CEPÊDA, R.; VAHIA, C. M.; 2011, “EvolTrack: A Plug-in-Based Infrastructure for Visualizing Software Evolution”. I Workshop Brasileiro de Visualização de Software (WBVS), São Paulo, SP, Brasil (to appear).